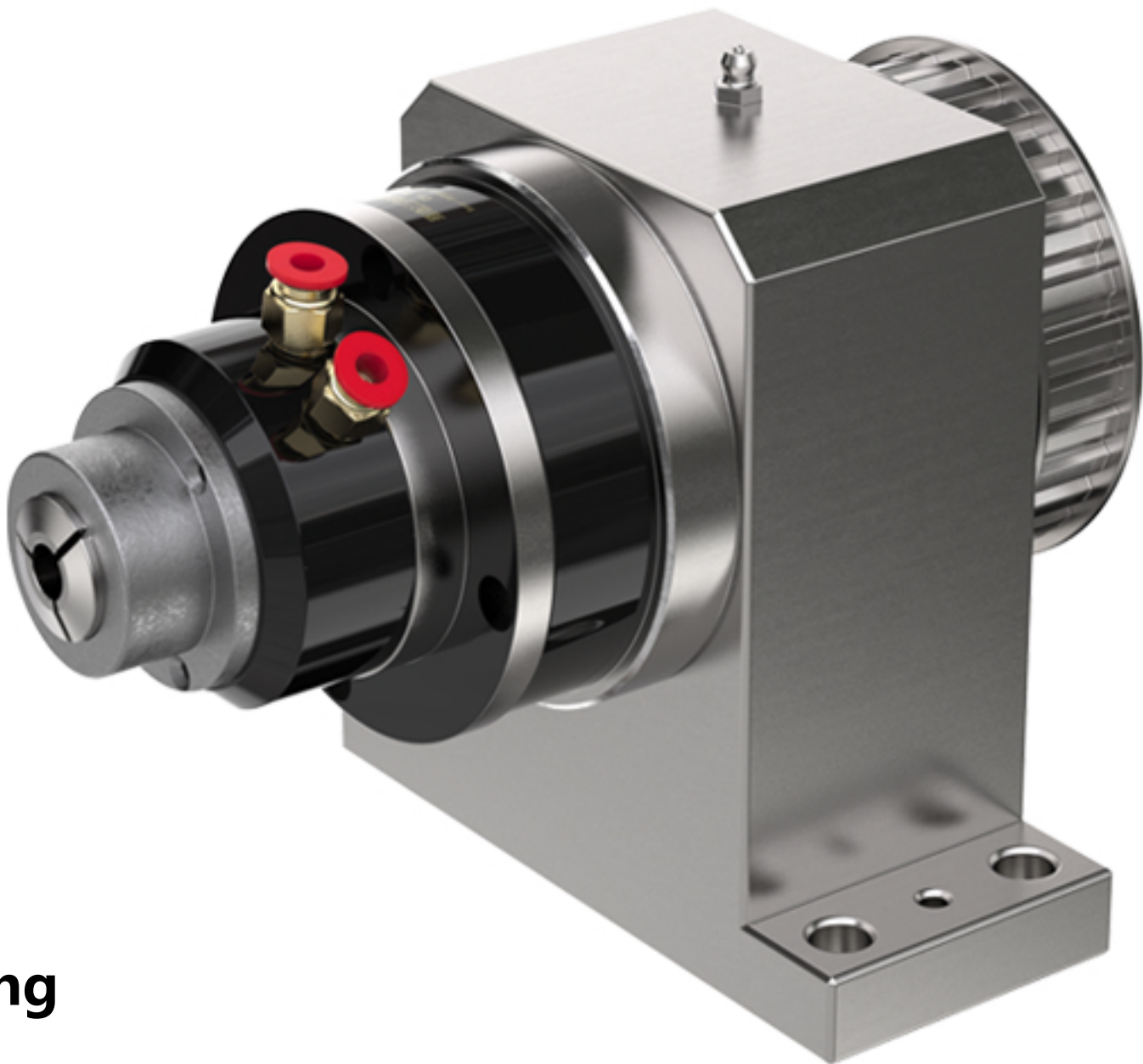
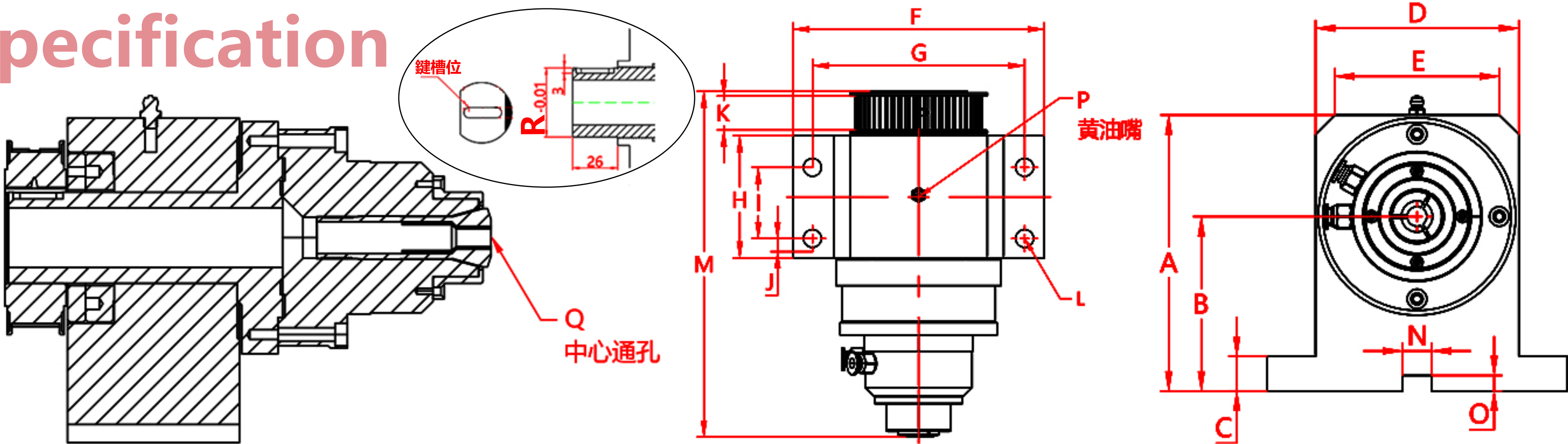


GAL+DR HIGH SPEED SPINDLES

- Steel chuck body, small outside diameter
- Maximum speed 3500 RPM
- Center through hole design
- different workpiece to replace the collet
- Ontology accuracy is 0.005mm,clamping repeatability 0.005mm (Customizable high precision within 0.002mm)
- dustproof and waterproof
- Vertical installation/bedroom horizontal installation can be
- The rear transmission can be directly connected by motor coupling synchronous wheel belt/gear connection
- Widely used in precision lathes/grinders/laser cutting/robots and other automation equipment



Specification



Item	DR25+GAL-15	DR25-L+GAL-25	DR45-L+GAL-32	DR25+GAL-W20	DR25-L+GAL-W25	DR45-L+GAS-16C	DR68+GAL-65
A	142.5	200	240	142.5	200	240	240
B	90	110	135	90	110	135	130
C	18	18	18	18	18	18	20
D	105	170	210	105	170	210	220
E	85	150	170	85	150	170	180
F	155	220	260	155	220	260	280
G	131	196	236	131	196	236	256
H	75.5	95	95	75.5	95	95	140
I	44	55	55	44	55	55	110
J	12	20	20	12	20	20	15
K	21	21	27	21	21	27	20
L	φ11	φ11	φ11	φ11	φ11	φ11	φ11
M	213.5	276.74	309	244	289.89	312	354.3
N	15	15	15	15	15	15	20
O	8	8	8	8	8	8	10
P grease fitting	M6	M6	M6	M6	M6	M6	M6
Q Through hole	15mm	25mm	32mm	14mm	19mm	40mm	65mm
R	26mm/40mm-0.01	26mm/40mm-0.01	26mm/40mm-0.01	26mm/40mm-0.01	26mm/40mm-0.01	26mm/40mm-0.01	26mm/40mm-0.01
spindle through	26mm	26mm	46mm	26mm	26mm	46mm	50mm
synchronous wheel	5M-50Y-N40	8M-50Y-N60	L-50Y-N35	5M-50Y-N40	8M-50Y-N60	L-50Y-N35	/
Keyway	21*6*3mm	21*6*3mm	21*6*3mm	21*6*3mm	21*6*3mm	21*6*3mm	28*8*3mm
Rotary speed	3500RPM/min	3000RPM/min	2500RPM/min	3500RPM/min	3000RPM/min	2500RPM/min	2000RPM/min
N.W	12.5kgs	28kgs	33kgs	13kgs	26.5kgs	75kgs	92kgs