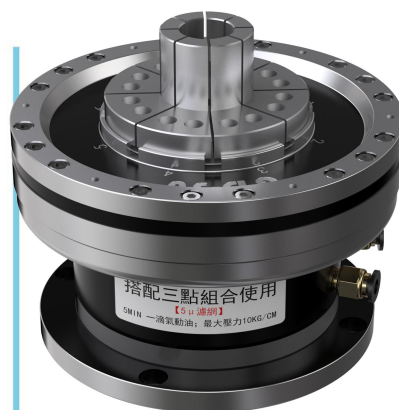


Diaphragm Air Chuck

GD High Precision Diaphragm

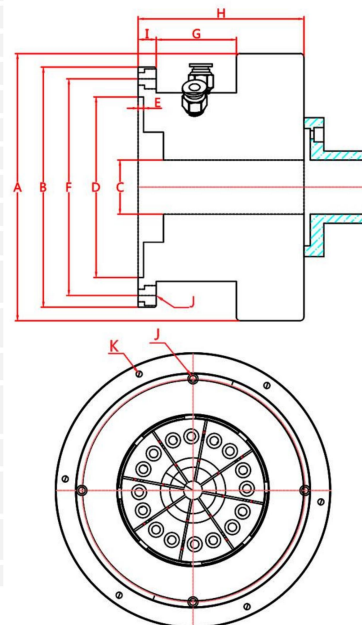


GD series chuck is a high-precision diaphragm pneumatic rotary chuck, body accuracy of 0.002mm, clamping repeatability of 0.005mm, clamping force through the pneumatic fine-tuning, suitable for a variety of precision parts machining clamping, no deformation, internal support can be clamped externally, the jaws of the different workpiece replacement, easy to install, the clamping jaws of the eight-flap design, to support the shaped workpiece clamping, the body body of the body of the small, through-hole, suitable for a variety of High-precision grinding machine/inspection equipment.

- Steel collet body for long service life
- Built-in rotary cylinder, no need to install additional rotary cylinder.
- Clamping repeatability within 0.005mm
- High rotational speed, maximum speed 3500rpm
- Internal support and external clamping, no deformation of workpiece.
- Suitable for thin-walled and fine workpiece clamping, with fine adjustment of clamping strength.
- Positioning holes on the end face can locate the clamping length.
- Dustproof and waterproof, strong rigidity

Specification

Item	GD-10	GD-30	GD-65
A	80	148	208
B	82	133	198
C	10	30	65
D	50	100	150
E	3	3	4
F	70	120	180
G	27	44.5	57
H	88	92	112
I	10.5	10	14
J	M6*4 (pcd70)	M6*4 (pcd120)	M8*4 (pcd180)
K	M4*6 (pcd72)	M4*6 (pcd138)	M4*6 (pcd200)
Gripper	JD-10 Wild Claw	JD-30 Wild Claw	JD-65 Wild Claw
Max through hole	10mm	30mm	65mm
Accuracy	0.005mm	0.005mm	0.005mm
Max rotary speed	3500rpm/min	3000rpm/min	2500rpm/min
Operation pressure	3-8kgs	3-8kgs	3-8kgs
N.W	1.9kgs	6kgs	15kgs



Diaphragm Air Chuck