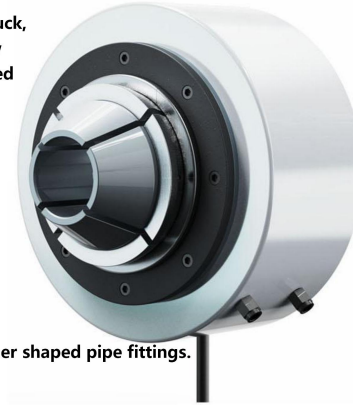


## Rotary Power Chuck

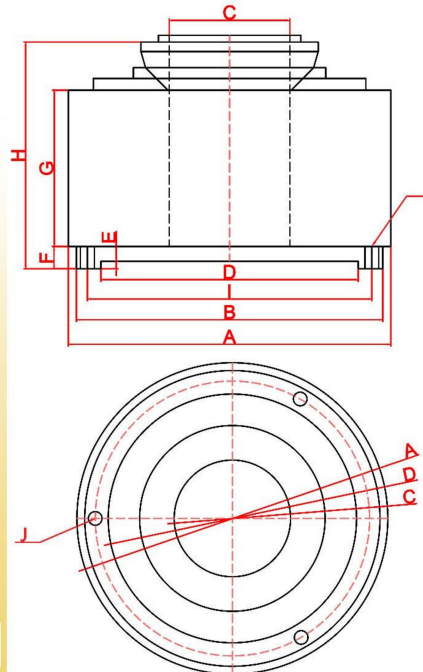
### DZ Laser Cutting Pneumatic Rotary Collet

DZ series chuck is a cylinder front hollow rotary chuck, specially developed for laser tube cutting machine new rotary chuck, the center through hole can be customized to a maximum of 800mm, pneumatic clamping and loosening, different workpiece replacement of the vice jaws, forced to open, not jamming, open stroke 2.5mm-100mm can be customized.

- ▲ Cylinder front mounted, no additional installation of rotary cylinders
- ▲ Large stroke, large through-hole
- ▲ No jamming, forced opening
- ▲ Suitable for square/round/elliptical pipes and other shaped pipe fittings.



#### Specification:



Item	DZ-70	DZ-90	DZ-120
A	236	238	278
B	188	226	228
C	68	89	120
D	155	190	190
E	5.5	5.5	5
F	18	16	18
G	100	115	114
H	158	167	182
I	172	210	210
J	M10*3 (pcd172)	M12*3 (pcd210)	M12*3 (pcd210)
Max through hole	68mm	89mm	120mm
Auxiliary claw	DC-70	DC-90	DC-120
Max rotary speed	1400rpm/min	1100rpm/min	900rpm/min
Opening range	2.5mm	2.5mm	2.5mm
Operation pressure	3-15kgs/cm <sup>2</sup>	3-15kgs/cm <sup>2</sup>	3-15kgs/cm <sup>2</sup>
Clamping force	5000kgf	5500kgf	6000kgf
N.W	22kgs	29kgs	35kgs