

Expanding Mandrel

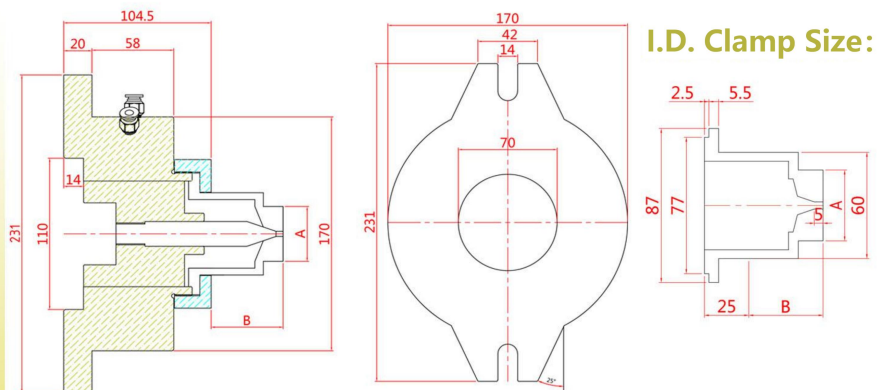
CHF-44I Fixed Internal Brace - Forward Push Type

- Cylinder front, no additional cylinder installation
- Push forward clamping, different workpieces to change the I.D. clamping
- Repeat clamping accuracy 0.03mm
- Enlarged cylinder, stable performance
- Positioning holes on the end face to locate the clamping length
- One-to-one customization of I.D. clamps
- Small size, space saving, improve efficiency
- Suitable for CNC machining centers, drilling and cleaning tables, etc.



Specification:

Expanding Mandrel



Item	Inner diameter	Clamping range	Accuracy	Operatio npressure	N.W
CHF-44I	C-44I	8-55mm	0.03mm	3-8kgs	13.2kgs