

Spindle Holder

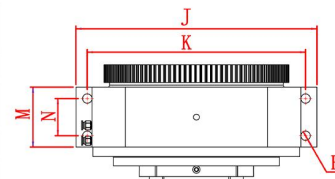
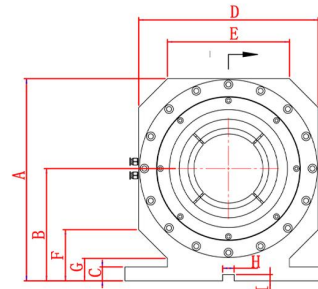
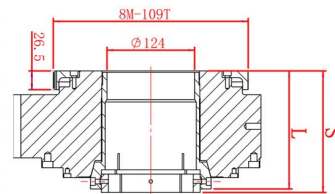
DRU Spindle Holder - Cartridge Clip

Deray chuck DRU series is a cartridge type hollow rotary collet holder with both ends clamped at the same time, the width of the collet body can be customized according to the length of the workpiece, different workpieces to replace the collet, single collet/double collet use, the repeatability of the clamping accuracy of 0.025mm within the accuracy of customizable 0.005mm or less. Motor synchronous belt rotation, the highest speed of 3000 rpm, can be customized for higher speed spindle, oil and air pressure can be, small size, high rigidity, large through-hole design with automatic loading and unloading, DRU spindle is widely used in a variety of high-precision head lathe machining and ministry machine processing (such as: bicycle parts, automotive parts, military products, sports equipment, precision engraving machine, internal and external grinding, balance test, etc.)



Item	DRU-65S	DRU-90S	DRU-125S
A	267.5	306	351
B	150	170	195
C	20	21	24
D	235	272	312
E	167	185	212
F	66.5	77.5	88.9
G	32.5	34	38.9
H	20	20	20
I	11	11	11
J	270	327	360
K	246	300	326
L	141	146.5	167
M	65.5	79.5	89.5
N	41.5	51.5	55.5
O	25	26.5	26.5
P	12	14	17
Q	78T*8M	78T*8M	109T*8M
R	4-φ14	4-φ14	4-φ14
S	work custom-made	work custom-made	work custom-made
Max through hole	60mm	88mm	124mm
Max rotary speed	1600/3000rpm/min optional	1400/2500rpm/min optional	900rpm/min
Synchronous	78T-8M	94T-8M	109T-8M
Operation pressure	3-8kgs/cm ²	3-8kgs/cm ²	3-8kgs/cm ²
Piston area	197.33cm ²	232.67cm ²	295.3cm ²
N.W	35kgs	56kgs	97kgs

Specification:



Spindle Holder