

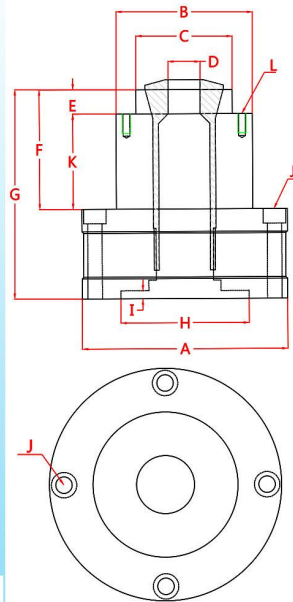
Stationary Collet Chuck

DHS/GHP Fixed oil/pneumatic collets

DGDR brand fixed hydraulic chuck, side oil with manual switch or foot switch or solenoid valve switch control loosening clamping, installation of small outer diameter, the center of the through-hole, clamping range of 0.35mm-40mm, different workpiece replacement of the barrel clamps, the inner hole of the root of the diameter of the workpiece customized for one-on-one use, the barrel clamps pointed mouth/flat mouth/steps to bear on the design of the clamp can be clamped repeatability 0.015 MM within the opening stroke of 0.8mm, a table can be installed more than one small fixed collet, space-saving, improve efficiency, cylinder increase, stable clamping force, the bottom of the collet has a mounting screw holes through the flange connected to the installation of the worktable, collet high rigidity design, dustproof and waterproof, reduce maintenance costs, suitable for installation in a variety of drilling and milling table and other CNC machining centers.



Specification:



Item	DAS-Y15	DHS-Y15	DHS-Y32	GHP-16C
A	97	97	128	178
B	54	54	85	120
C	34	34	60	100
D	15	15	32	40
E	20	20	15	10
F	57.5	57.5	79	69
G	88	88	130	125
H	70	69.8	80	140
I	3	3	5	4
J	countersunk hole M5*4(pcd85)	countersunk hole M5*4(pcd85)	countersunk hole M8*4(pcd112)	countersunk hole M8*6(pcd162)
K	37.5	37.5	64	59
L	M3*4 (pcd47)	M3*4 (pcd47)	M5*4 (pcd72)	M4*4 (pcd92)
Max through hole	15mm	15mm	32mm	40mm
Collet	YB-15	YB-15	YB-32	16C
Operatio npressure	3-8kgs/cm ² air pressure	3-16kgs/cm ² oil pressure	3-16kgs/cm ² oil pressure	3-16kgs/cm ² oil pressure
Clamping force	600kgf@16kgs/cm ²	1200kgf@16kgs/cm ²	4000kgf@16kgs/cm ²	4000kgf@16kgs/cm ²
N.W	2.5kgs	2.5kgs	7kgs	13.5kgs