

Stationary Chuck

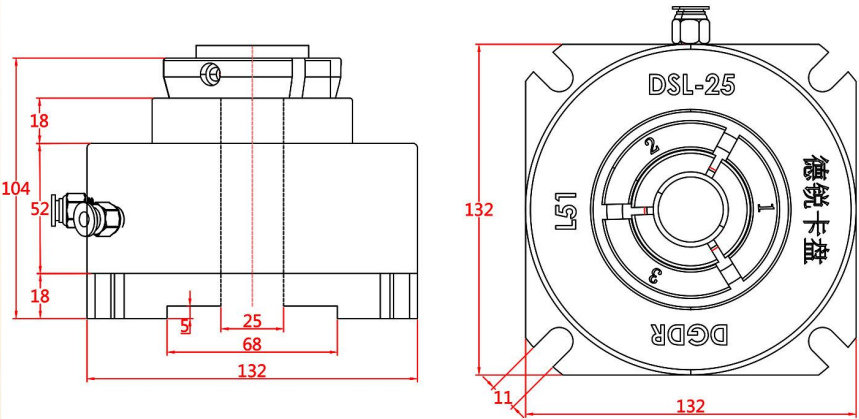
DSL-25 Large Stroke Fixed Collet

DSL-25 is an oil and gas pressure universal hollow fixed collet, steel collet body, the slip sleeve forward push clamping workpiece, can only be loosened clamping, can not follow the spindle to rotate together, the maximum through-hole clamping 25mm, different workpieces to replace the vice jaws, support for a variety of shaped holes machining, four corners of the fixed to the workbench, streamlined volume, space-saving, a workbench can accommodate more than one fixed collet, collet Forced discharge design, no jamming, long service life, dust-proof and chip-proof cutting fluid, preferred choice for welding equipment.

- ▲ Steel collet body for long life
- ▲ Opening stroke 2.5mm
- ▲ Clamping repeatability within 0.03mm
- ▲ Hydraulic and pneumatic pressure
- ▲ Small size, large through-hole (25mm)
- ▲ Dust and water resistant (under inflation)
- ▲ Suitable for all types of drilling and milling tables (CNC machining centers).



Specification:



Item	Opening range	Max through hole	Accuracy	Operation pressure	Clamping force	N.W
DSL-25	2.5mm	25mm	0.03mm	3-8kgs	2500kgf@7kgs/c	9kgs