

# High Precision Colle Chuck

## GPC Passive Collet Chuck - Pull Back Type

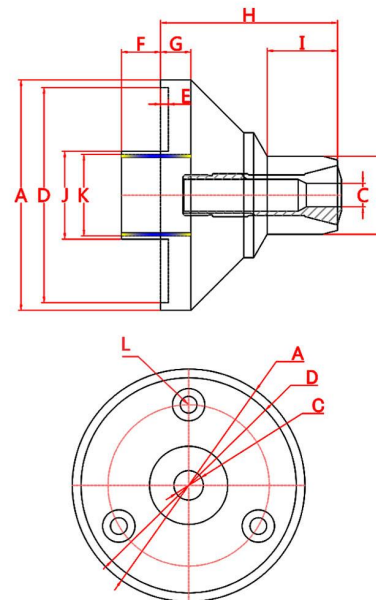
GPC series is a collet pull-back collet, rear with cylinder or air cylinder, the highest speed of 6000 rpm, the bottom through the flange mounted on the front of the spindle, different workpiece replacement of the simple clamping, internal support for external clamping dual-use, clamping repeatability of 0.015mm within the performance and stability, is widely used in a variety of CNC lathe processing.

- ▲ Steel collet body for long life
- ▲ Internal support and external clamping
- ▲ Pull back clamping, with cylinder/pneumatic cylinder
- ▲ Clamping repeatability within 0.015mm
- ▲ Maximum speed 6000 rpm
- ▲ Flanges and adapter nuts according to spindle nose size



Item	GPC-15D	GPC-25D	GPC-W25
A	118	118	118
B	40	60	45.5
C	15	25	19
D	110	110	110
E	4	4	4
F	20	20	20
G	15.5	15.5	15.5
H	90.5	111	103
I	36	30	20
J	45	45	45
K	M40*P1.5	M40*P1.5	M40*P1.5
L	M10*3 (pcd82.6)	M10*3 (pcd82.6)	M10*3 (pcd82.6)
Collet	YB-15	YB-25	W25
Drive	Air / Oil	Air / Oil	Air / Oil
Max through hole	15mm	25mm	19mm
Accuracy	0.015mm	0.015mm	0.015mm
Operatio npressure	3-8kgs	3-8kgs	3-8kgs
Max rotaryspeed	6000rpm/min	6000rpm/min	6000rpm/min
N.W	2.6kgs	3.5kgs	3kgs

## Specification:



High Precision Colle Chuck