

Stationary Chuck



CAF Series

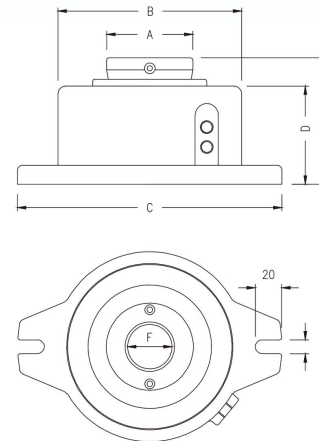
Stationary Chuck

- ▲ Cast iron body
- ▲ Classic model for Tapping and Drilling
- ▲ A very high CP ratio product
- ▲ Double Piston area, powerful clamping force
- ▲ High resistant to chips, fluid and dust



Introduction

CAF series stationary chuck is the very first generation of JATO most classic model. Old model lasting nearly 40 decades till present day. A very high CP ratio as this model being long product life, easy to maintain and works great in tapping and grill machine. Operarting by input air either hydro. Cost effective stationary collet chuck.



Dimension and Specifications

Model	CAF-25	CAF-40	CAF-70
A	60(2.36")	94(3.70")	136(5.35")
B	162(6.38")	196(7.72")	216(8.50")
C	221(8.70")	265(10.43")	285(11.22")
D	73(2.87")	96(3.78")	103(4.06")
E	103(4.06")	124(4.88")	135(5.31")
F	26(1.02")	48(1.89")	68(2.68")
Collet/ Jaw	YB-25 Collet	C-40 Jaw	C-70 Jaw
Air/ Hydraulic	Air/ Hydraulic	Air/ Hydraulic	Air/ Hydraulic
Operating Pressure	3-15kg/cm ² (43-214psi)	3-10kg/cm ² (43-114psi)	5-10kg/cm ² (43-114psi)
Max. Capacity (Through /None)	26mm/28mm(1.02"/1.10")	45mm/50mm(1.77"/1.97")	68mm/90mm(2.68"/3.54")
Piston Area	130mm(5.11")	192mm(7.55")	242mm(9.52")
Gripping Force	3185kgf@7kg/cm ² (7007lbf@100psi)	4700kgf@7kg/cm ² (10340lbf@100psi)	5930kgf@7kg/cm ² (13046lbf@100psi)
Net Weight	9.0kgs(19.8lbs)	14.0kgs(30.8lbs)	23.0kgs(50.6lbs)

Stationary Chuck